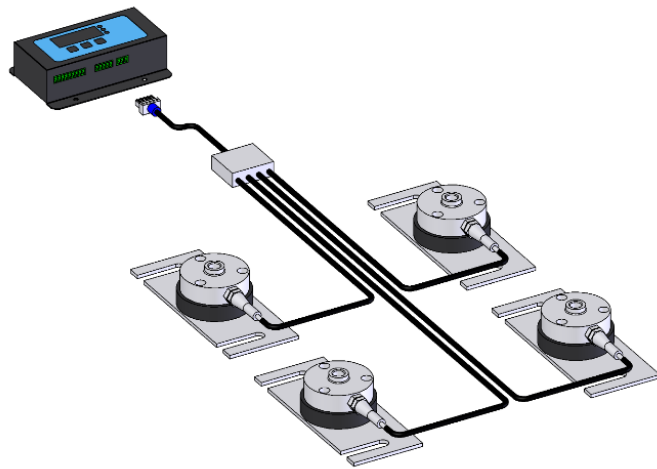
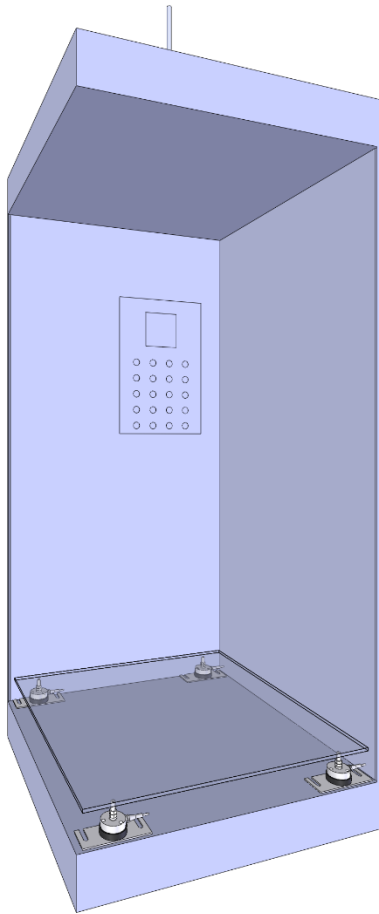


# Elevator Weighing Kit – Cabin

LEWS-xt-x-xB6-D2-E



## Short Description



- 4/8/12 Aluminium IP65 compression load cells
- Pre-calibrated IP54 indicator
- High accuracy
- Durable design
- Suitable for elevator weighing
- Easy installation, plug and play
- Indicates when elevator is loaded for 90% of the capacity
- Determines if the elevator is overloaded
- When less than 15 kg is loaded, the elevator doesn't move
- Adjusts engine power to actual weight

## Set Contains

Quantity	Capacity	Full article description
4 / 8 / 12	1t	L2H-1-1t-2B Load Cell
1	-	IP65 fully potted Junction Box
1	-	Top-Sensors HC51x Indicator

Specifications and dimensions are subject to change without notice and do not constitute any liability whatsoever.

## Technical Specifications Single Load Cell (model no. L2H-1-1T-2B)

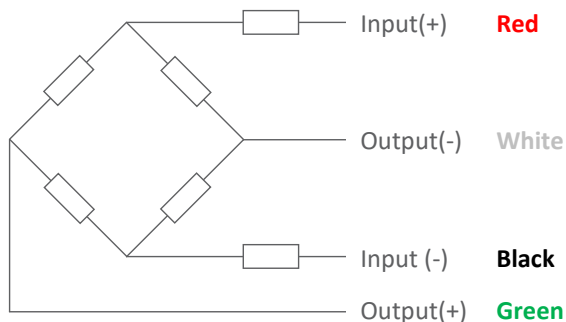
Maximum Capacity ( $E_{max}$ )	t	1
Output Sensitivity ( = FS )	mV/V	$1.0 \pm 0.2$
Max. Number of Load Cell Intervals	$n_{LC}$	3000
Ratio of min. LC Verification Interval	$Y = E_{max} / V_{min}$	10000
Zero Balance	%FS	$\leq \pm 0.1$
Combined Error	%FS	$\leq \pm 0.5$
Creep Error (5 minutes)	%FS	$\leq \pm 0.05$
Non-Linearity	%FS	$\leq \pm 0.5$
Repeatability	%FS	$\leq \pm 0.5$
Hysteresis	%FS	$\leq \pm 0.5$
Temperature Effect on Zero (ZTC)	%FS/10°C	$\leq \pm 1.0$
Temperature Effect on Sensitivity (STC)	%FS/10°C	$\leq \pm 0.3$
Safe Overload	of $E_{max}$	120%
Ultimate Overload	of $E_{max}$	150%
Lateral Break Force	N	4000 @ 20°C
Excitation, Recommended Voltage	V	5 ~ 10
Excitation, Maximum Voltage	V	12
Input Resistance	$\Omega$	$350 \pm 50$
Output Resistance	$\Omega$	$350 \pm 50$
Insulation Resistance (50V)	M $\Omega$	$\geq 2000$
Compensated Temperature	°C	-10 ~ + 40
Operating Temperature	°C	-35 ~ + 65
Storage Temperature	°C	-40 ~ + 70
Element Material		Aluminium
Ingress Protection (acc. to EN 60529)		IP65

## Wiring

### Features:

Cable type: Shielded, 4 conductor cable  
 Cable diameter:  $\varnothing$  5.0mm  
 Cable length: 2.0m  $\pm$  0.02m  
 Cable jacket: PVC  
 Shield not connected to element

### 4-Wire Connection Diagram



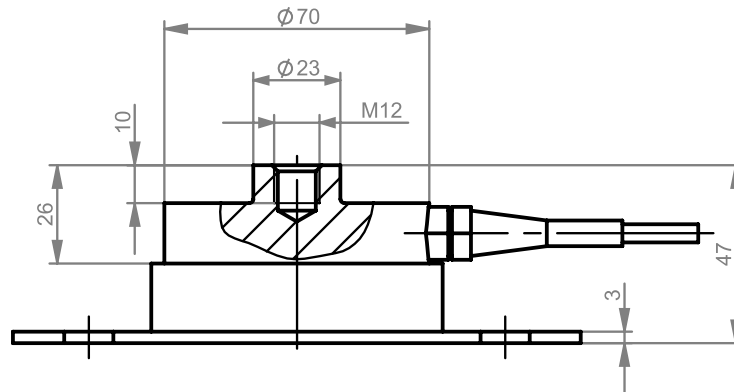
Specifications and dimensions are subject to change without notice and do not constitute any liability whatsoever.

# Elevator Weighing Kit – Cabin

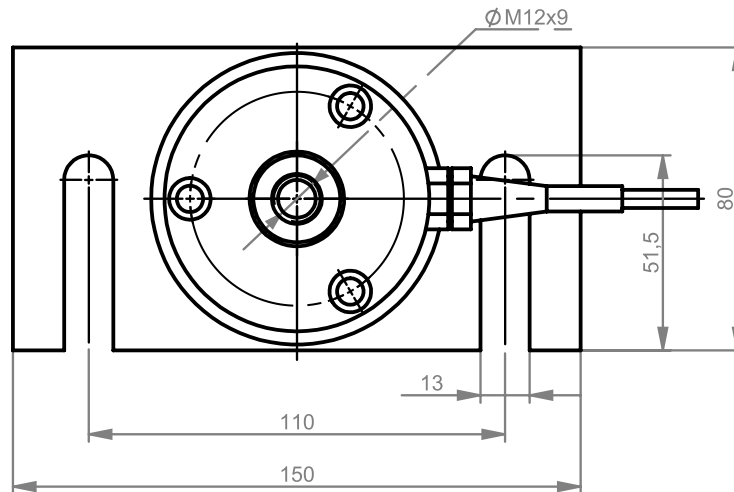
LEWS-xt-x-xB6-D2-E

## Dimensions in mm

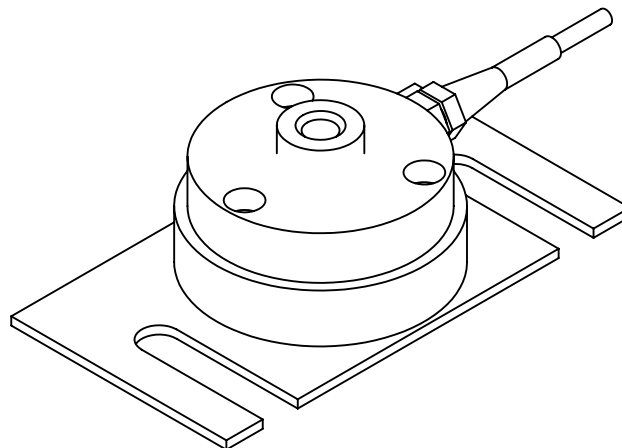
### Side View



### Top View



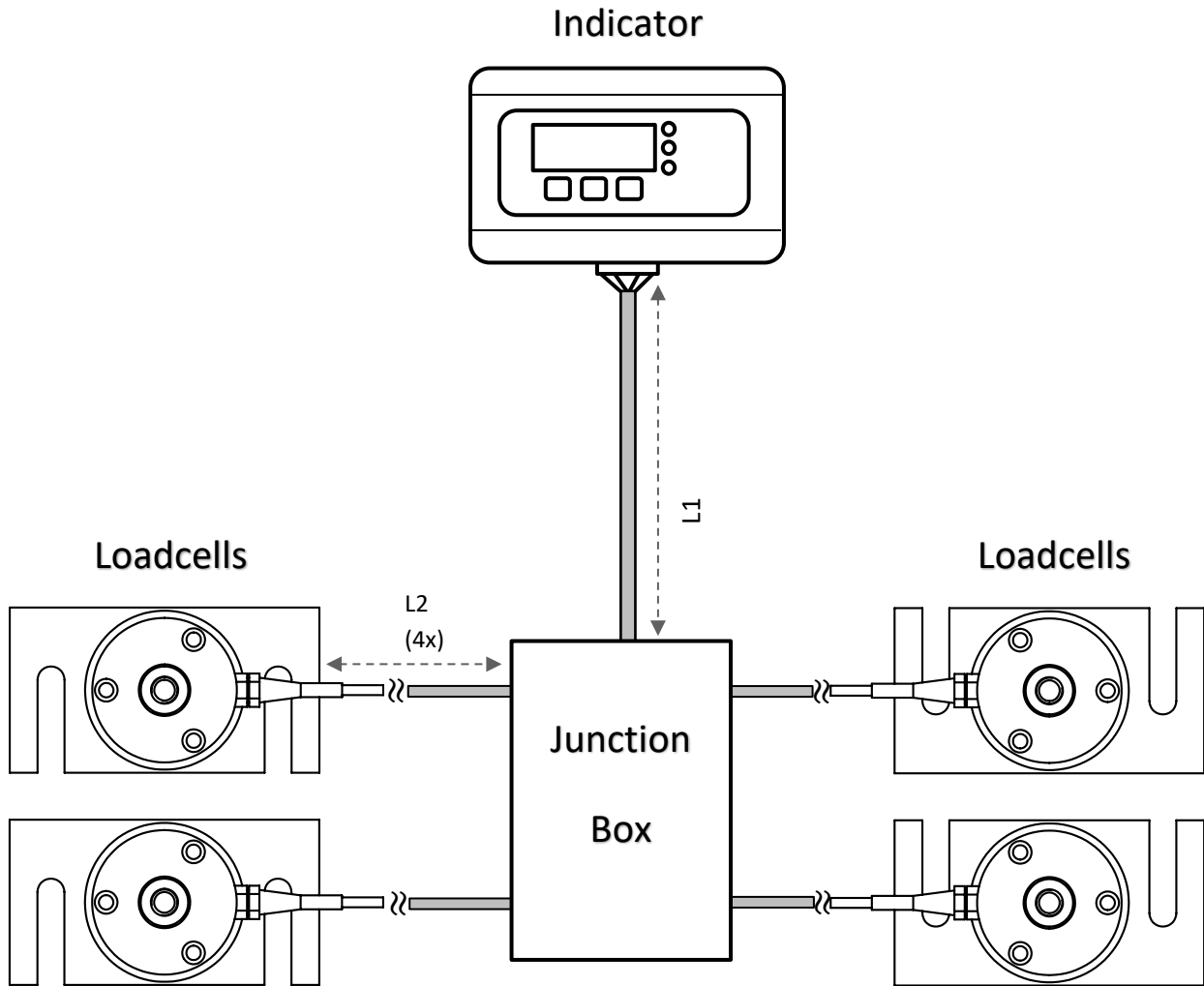
### Isometric View



**Note:** The loadcells are already mounted on the bottom plates.

Specifications and dimensions are subject to change without notice and do not constitute any liability whatsoever.

## Overall Assembly Diagram



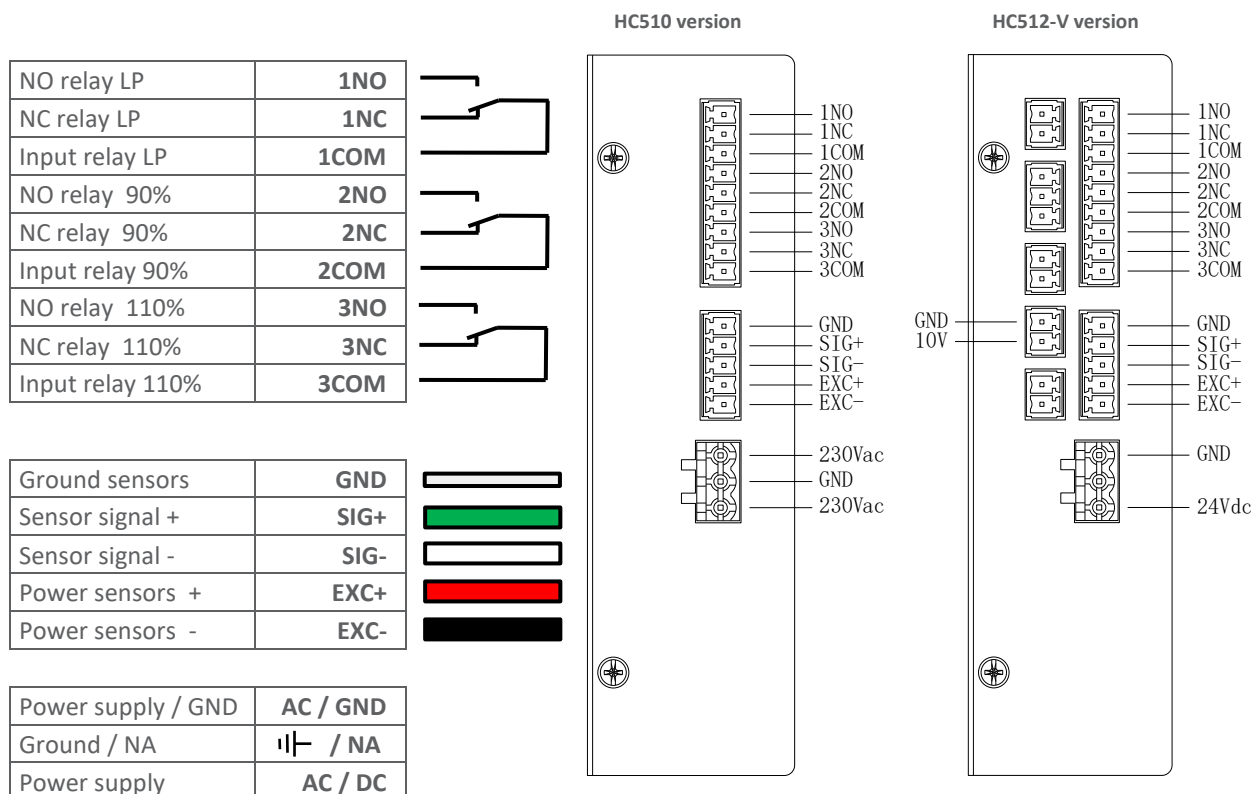
**Cable lengths:** L1 (Indicator to Junction box): 5.0m / L2 (Loadcell to Junction box): 2.0m

**Note:** This diagram shows 4 loadcells. Versions with 8 or 12 loadcells are also available.

## Technical Features Top-Sensors HC51x Indicator

<b>Power Supply</b>	<b>HC510:</b> 230VAC ± 10% / 50~60 Hz	<b>HC512:</b> 24VDC ± 10%	
<b>Power Consumption</b>	6 W (max.)		
<b>Maximum Current Switched by Relay Outputs</b>	10 A / 28VDC		
<b>Operating Mode</b>	continuous		
<b>Number of Programmable Relay Outputs</b>	3		
<b>Setting Threshold Range Loading</b>	Set in kg		
<b>Passenger Availability</b>	0-50 kg		
<b>90%</b>	0-4000 kg	0-8000 kg	0-12000 kg
<b>110%</b>	0-4000 kg	0-8000 kg	0-12000 kg
<b>Maximum Load</b>	Sum of individual loadcells		
<b>Maximum Permissible Short-time Overload</b>	150%		
<b>Lower Limit of Transformations</b>	5 kg		
<b>Maximum Duration of the Conversion Cycle</b>	2 seconds		
<b>Display</b>	4-digit LED, 14.2mm 7-segment		
<b>Indicators</b>	Overload, Caution, Pre-caution		
<b>Keypad</b>	3-key flat tactile switches		
<b>Operating Temperature Range</b>	-10 ~ +40°C		
<b>Storage Temperature Range</b>	-20 ~ +50°C		
<b>Humidity</b>	0 ~ 90% @ 20°C (rel.)		
<b>Degree of Protection for IEC 60529 (DIN 40050)</b>	IP54		

## Indicator Connection Diagram

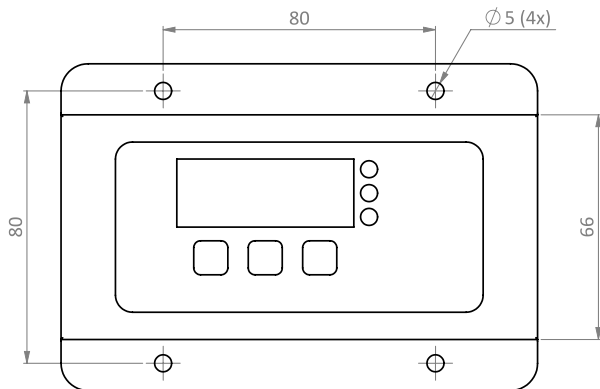


# Elevator Weighing Kit – Cabin

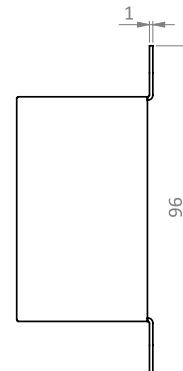
LEWS-xt-x-xB6-D2-E

## Indicator Dimensions in mm

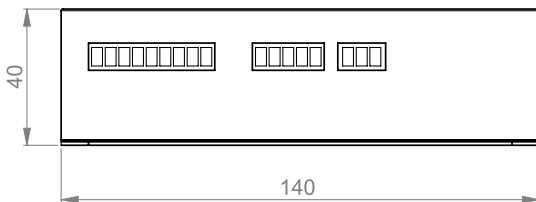
Top View



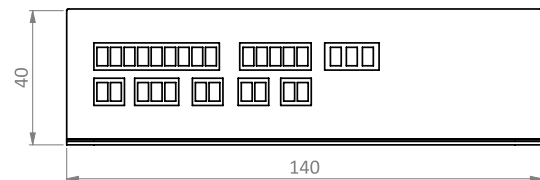
Side View



Front View HC510










Front View HC512-V



## Display Keys and Settings



Indicator	Status	Key	Functions
 <b>110%</b>	LED Overload		Reset button / Scroll parameter / Increase value
 <b>90%</b>	LED 90% Load		Select a digit / Scroll menu
 	LED Child only in elevator		Turn on and off the display / Enter

Specifications and dimensions are subject to change without notice and do not constitute any liability whatsoever.