

Short description



- Aluminium-alloy IP65 pedal force load cell.
- Colourless anodized
- Easy installation
- Suitable for pedal and break measurement

Available models

Capacity	Accuracy	Full article description
100kg	G1	L16A-G1-100kg-4T-W1

Specifications and dimensions are subject to change without notice and do not constitute any liability whatsoever.

Type L16A Load Cell

Detailed specifications L16A

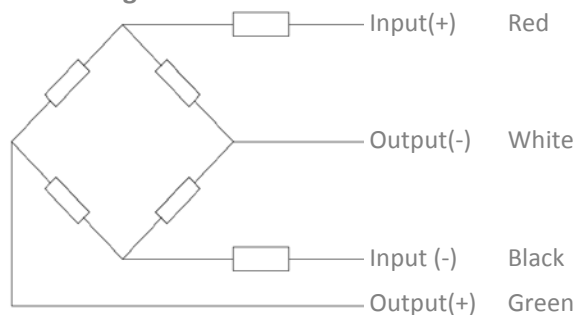
Accuracy class		G1
Output sensitivity (= FS)	mV/V	1.5 ± 0.2
Maximum capacity (E _{max})	kg	100
Combined Error	%FS	≤± 0.1
Temperature effect on zero	%FS/10°C	≤± 0.1
Temperature effect on sensitivity	%FS/10°C	≤± 0.1
Minimum dead load	Of E _{max}	0%
Safe overload	of E _{max}	150 %
Ultimate overload	of E _{max}	300 %
Zero balance	of FS	< ± 2.0 %
Excitation, recommended voltage	V	5 ~ 15
Excitation maximum	V	18
Input resistance	Ω	744 ± 6
Output resistance	Ω	700 ± 7
Insulation resistance	MΩ	≥5000 (at 50VDC)
Compensated temperature	°C	-10 ~+40
Operating temperature	°C	-20 ~ +50
Storage temperature	°C	-30 ~ +60
Element material		Aluminium
Ingress Protection (acc. to EN 60529)		IP65

Wiring

Wiring:

Shielded, 4 conductor telephone cable.
Cable diameter: Ø3.8mm.
Standard cable length: 4m.
Shield not connected to element.

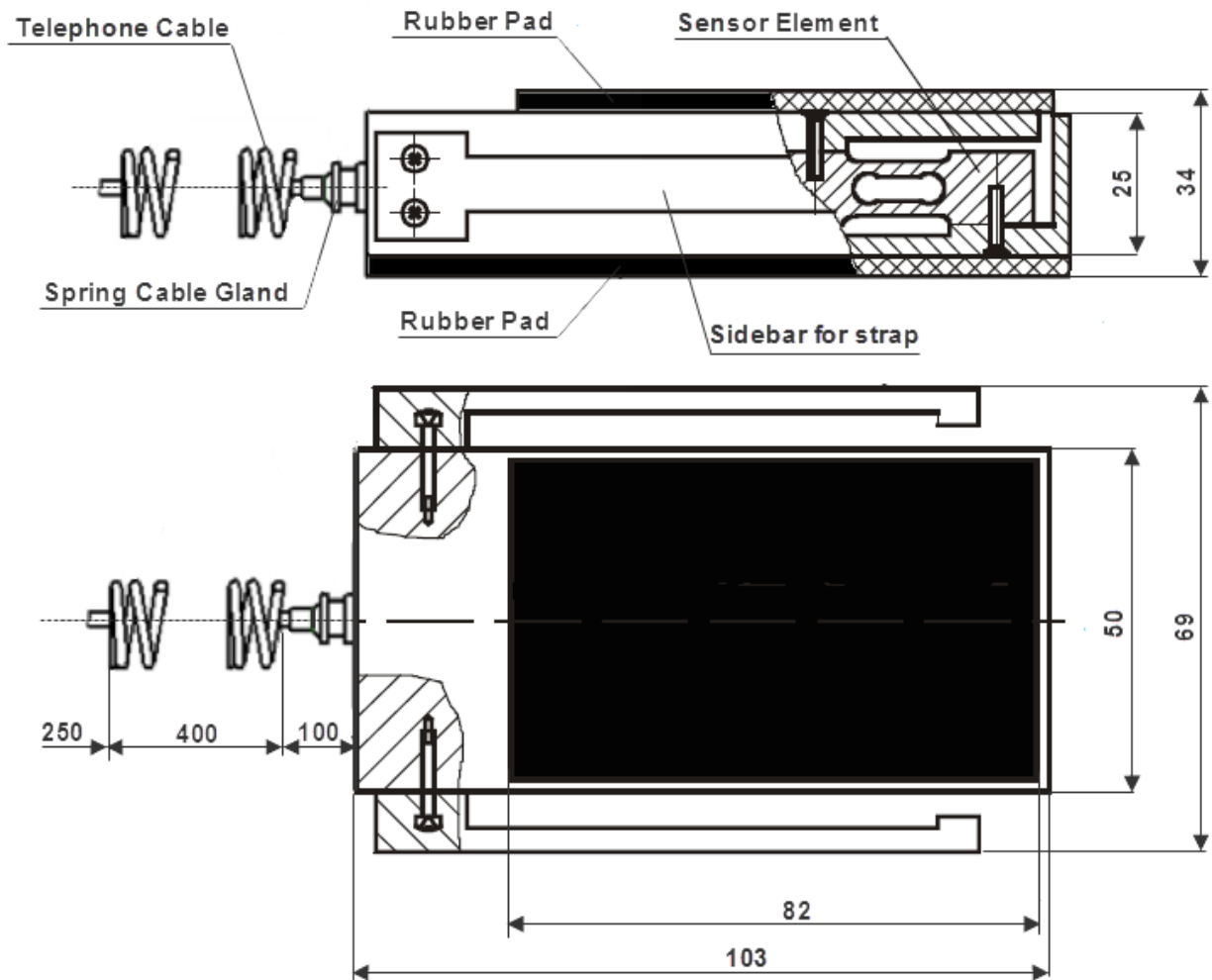
4-wire diagram



Specifications and dimensions are subject to change without notice and do not constitute any liability whatsoever.

Type L16A Load Cell

Dimensions in mm



Specifications and dimensions are subject to change without notice and do not constitute any liability whatsoever.