

Short Description



- Fit for 4-wire and 6-wire load cells
- Easy installation
- Cast aluminium housing
- Protective coating

Available Models

Model	Amount of Connections	Full Article Description	Part Number
JB01	3	JB01C-3	30010200
	4	JB01C-4	30010300
	6	JB01C-6	30010400
	8	JB01C-8	30010500

Detailed Specifications JB01

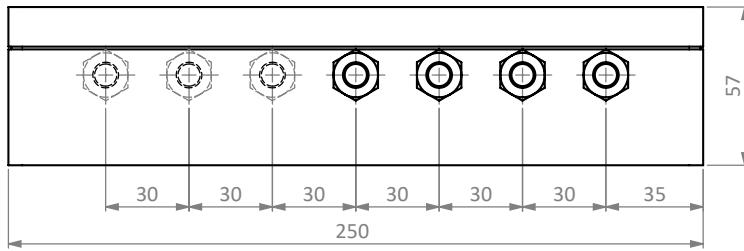
Load Cell Output Resistance Range	Ω	340 to 1100
Load Cell Input Resistance Range	Ω	340 to 1100
Excitation, Recommended Voltage	V(AC&DC)	5 to 20
Excitation, Maximum Voltage	V(AC&DC)	30
Load Cell Sensitivity Range	mV/V	0.6 – 6.2
Cable Diameter \varnothing	mm	5 - 6.2
Correction Method		Excitation trim
Trimming Range	Ω	24
Temperature Range, Operating	$^{\circ}\text{C}$	-40...+85
Ingress Protection		IP65
Housing Connected to Shield		Yes
External Grounding		Yes

Type JB01 Junction Box

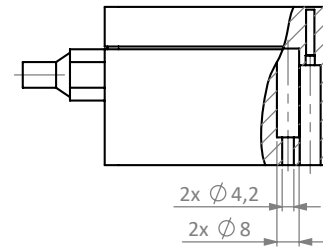
Dimensions in mm

Front View

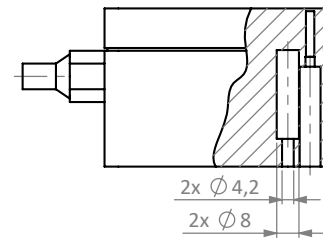
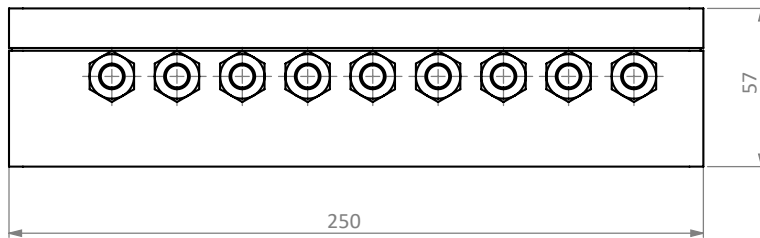
JB01C-3/4/6



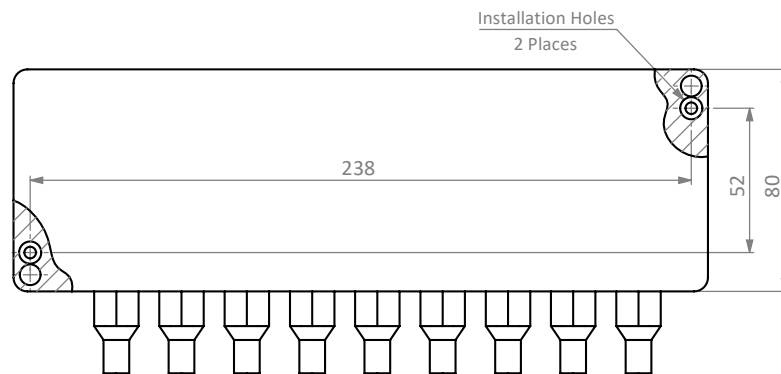
Side View



JB01C-8

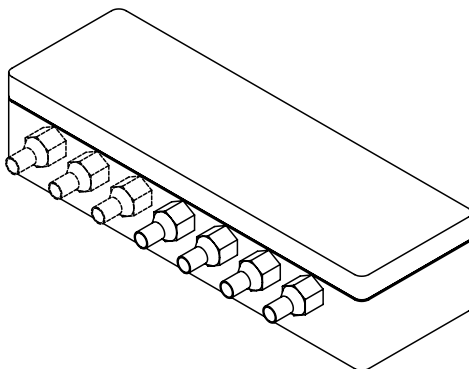


Top View

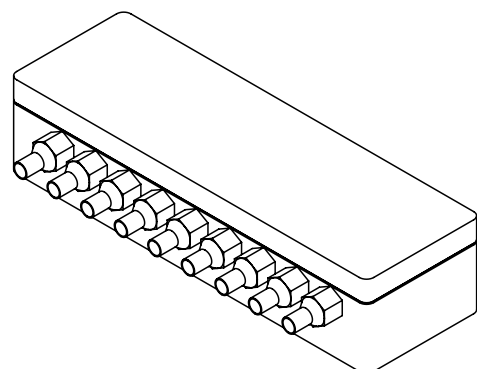


Isometric View

JB01C-3/4/6



JB01C-8



Specifications and dimensions are subject to change without notice and do not constitute any liability whatsoever.